



Chapel Ridge
at Lakewood



The Hills
Single Family Estate Homes

About Lakewood:

Lakewood is a beautiful, 2,200-acre, master-planned community situated between Highway 291 on the East, Lee's Summit Road on the West, and just two miles south of I-70. It is home to more than 2,300 residents who enjoy all the amenities Lakewood has to offer. Chapel Ridge at Lakewood is home to 3 custom communities, including [maintenance-provided luxury estate homes located in Chapel Ridge at Lakewood - The Hills.](#)



Lakewood Amenities:

Two (2) Lakes, covering ~365 Acres • 2 Marinas • Pontoon Boat Rental • Fishing • Swimming Beach • 3 Swimming Pools – Lakewood Aquatic Center, East Lake Village Pool & Lakewood Oaks • Lakewood Oaks Country Club – Par 71 Golf Course • 3 Playgrounds • 7 Tennis Courts • Pickleball Court • Basketball Courts • 2 Lighted Sand Volleyball Courts • 3 Baseball Fields • 3 Soccer Fields • Award-winning Public Schools – AAA Rated

Community Clubs & Activities include: Garden Club • Bridge Club • Mom's Club • Sail & Paddle Club • 2 Youth Swim Teams • Tennis Club • Yoga • Pilates • Stitches Club • Water Aerobics • Bass Fishing Club • Plus a monthly member calendar with daily events.



Your New Home in Chapel Ridge: The Hills

Choyce, LLC – Residential developer and Higdon Construction is offering estate lots in The Hills. Build your dream home, and enjoy the unique Lakewood lifestyle.

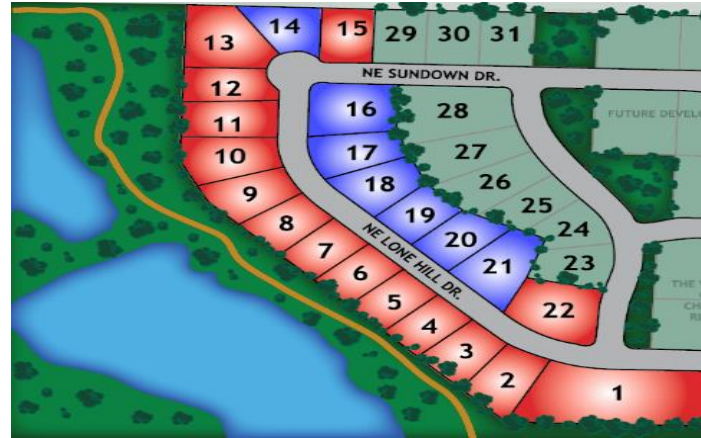
Key Information – Building in Chapel Ridge – The Hills:

- Lot purchases and residential construction are subject to the Declaration of Restrictions, outlining: minimum square footage, types of building materials, and more. Ask to review the document before purchase.
- All building plans must be approved by the developer, Choyce, LLC, before permit.
- The Hills has an active Homes Association(www.lpoa.com) to ensure community esthetics, all Lakewood amenities, and common ground maintenance. The monthly fee is \$147.24. In addition, one-time fees will be assessed at closing to cover recreational amenities (\$294.00) and new member fees (\$234.50).



Building Lot Selection and Pricing:

Higdon Construction and Choyce, LLC, is offering prime building lots in The Hills. Select from a variety of homesites, and choose from over 15+ custom home plans – or bring your own builder! A selection of highly experienced home builders is available upon request.



About Higdon Construction:

With over 20 years of custom home construction and quality renovations in the Kansas City metro area.

Contact: Kevin Higdon Email: office@higdonbuilders.com
Phone: 816-524-9797 Web: www.higdonbuilders.com

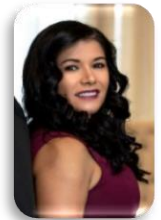


Marketed by



ReeceNichols
A BERKSHIRE HATHAWAY AFFILIATE

Gretchen Higdon, Real Estate Sales Executive
Wireless: 816-935-6049
Direct: 816-251-1469
Email: Gretchen@ReeceNichols.com
Web: <https://gretchenhigdonrealestate.com>



Call to Action: Learn More by Scanning QR Codes!

Open the camera on your iPhone or Android device, the AR code will be recognized and the information will be displayed.

Contact Kevin Higdon Construction:



Contact Gretchen Higdon:



Directions to Chapel Ridge:

